

# Advancing Passive House Policy

## NAPHN 2016 policy session 1

### presentations

*“The building sector offers the largest low-cost potential in world regions to lower emissions.”*

*- Dr. Diana Urge-Vorsatz, Vice Chair,  
Intergovernmental Panel on Climate Change (IPCC)*

# appendix c: session 1 presentations


Joke Dockx  
Brussels  
Environment  
Administration

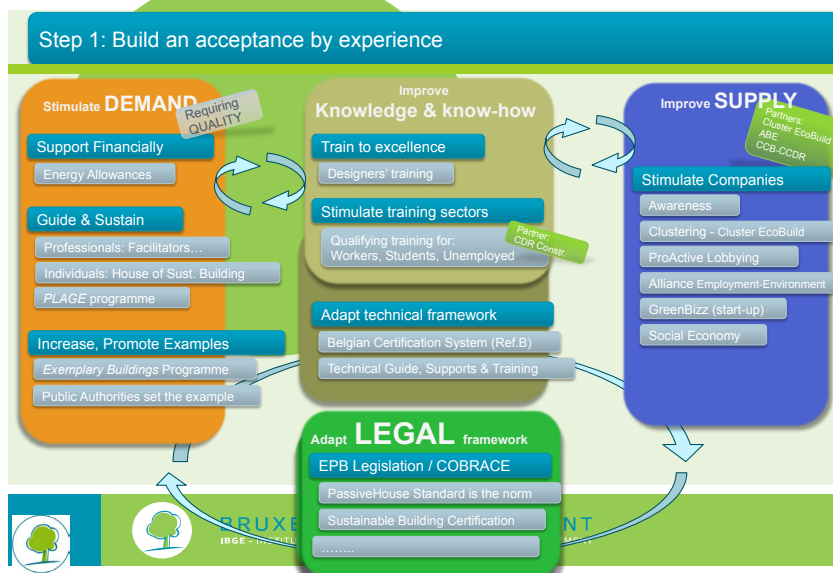
## NAPHN16

June 13<sup>th</sup> 2016

### making mandatory PH: some do's and don'ts

Joke [Yoka] DOCKX  
Head of Sub-Division « Promotion of sustainable buildings »  
Brussels Environment





## Step 2: involve stakeholders



Mandatory for each building permit for new buildings or important refurbishment (>75% of building shell) from 2015:

- Unthinkable in 2004
- The exemplary buildings showed technical and financial feasibility
- First positif feedback of building users
- Public authorities showing the example
- **Negotiated agreement with belgian building federations (construction, architects, promotor, engineers) – 19 octobre 2012**

3

## Step 3: it takes time (and patience)!



## Step 4: you'll have to ...

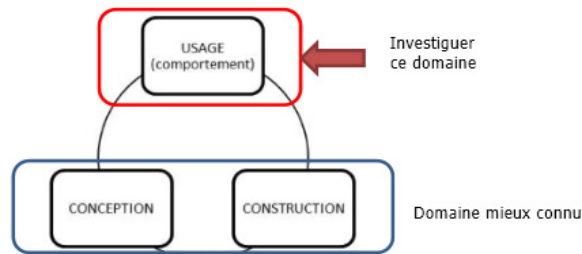
- Choose a calculation method



- Foresee modifications in the legislation/ calculation method to eliminate specific problems that will show up
- **(Inform! Communicate! Train! Accompany!)**<sup>3</sup>  
especially on design (KISS, focus users) and maintenance issues

## Post-technical issues

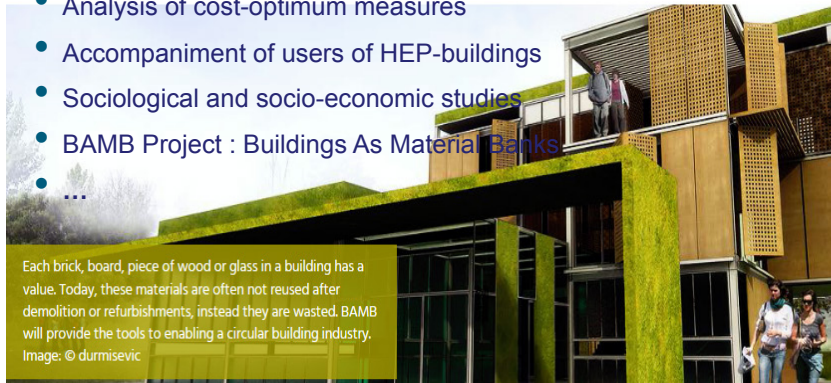
- Shift from « frontrunner » to « mainstream » occupants



- Don't focus too much on the « in vitro » energy performance, the « in vivo » performance depends a lot on real use
- Analysis of cost-optimum measures

## What's next?

- Nearly Zero Energy Buildings mandatory at last 1<sup>st</sup> January 2021
- Defining EPB-requirements for other types of buildings
- Analysis of cost-optimum measures
- Accompaniment of users of HEP-buildings
- Sociological and socio-economic studies
- BAMB Project : Buildings As Material Banks
- ...



Each brick, board, piece of wood or glass in a building has a value. Today, these materials are often not reused after demolition or refurbishments, instead they are wasted. BAMB will provide the tools to enabling a circular building industry.  
Image: © durmisevic

**The Building Energy Exchange connects the Manhattan real estate communities to energy and lighting efficiency solutions through exhibitions, education, technology demonstrations, and research. We identify opportunities, navigate barriers to adoption, broker relationships, and showcase best practices at our resource center in the Surrogate's Courthouse in Manhattan.**

**[be-exchange.org](http://be-exchange.org)**