



building  
energy  
exchange

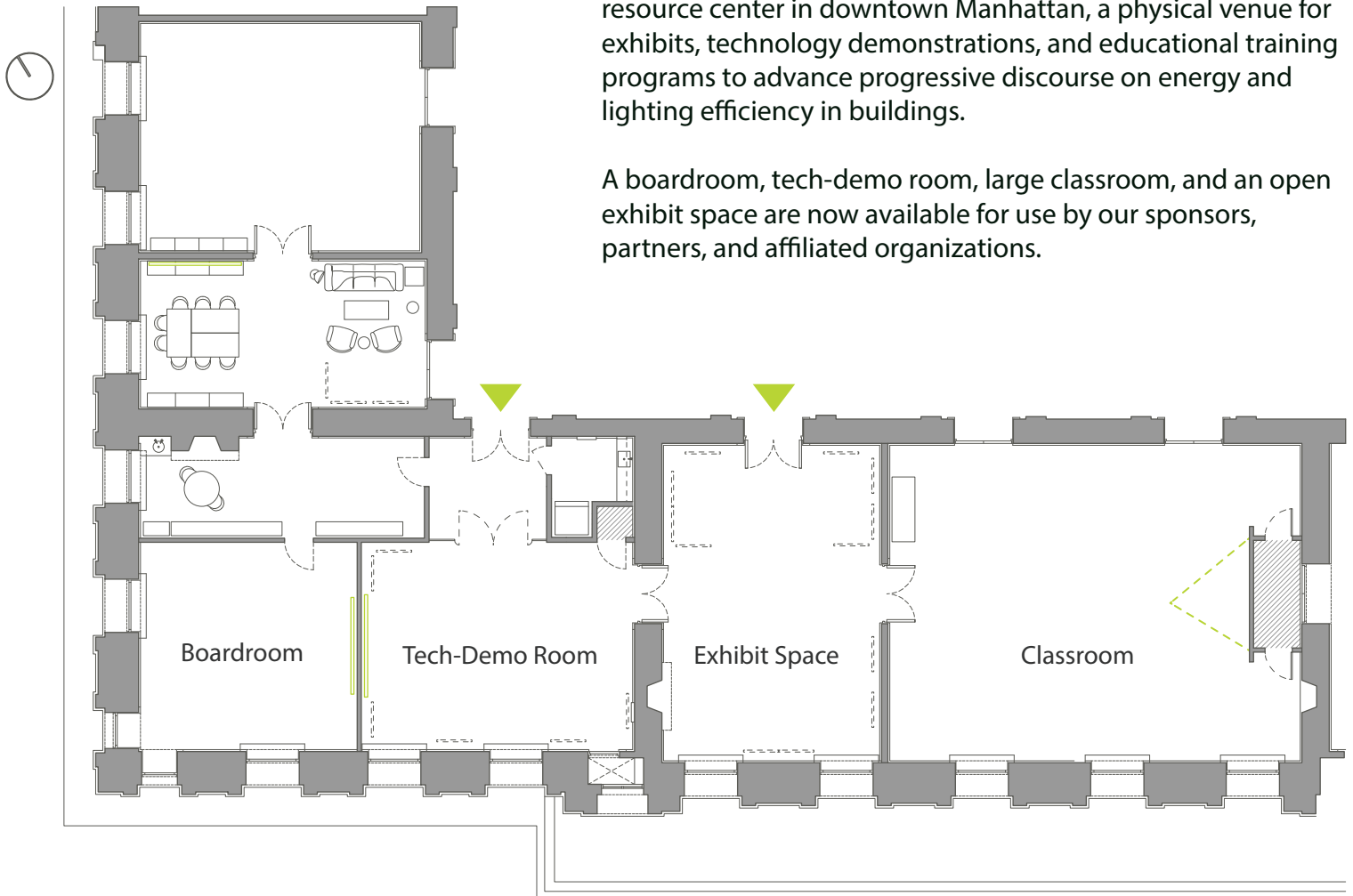


Surrogate's Courthouse  
31 Chambers Street, 6th Floor  
New York, NY 10007

The Building Energy Exchange connects the New York real estate and design communities to energy and lighting efficiency solutions through exhibitions, education, technology demonstrations, and research.

The heart of BEE is our energy and lighting efficiency resource center in downtown Manhattan, a physical venue for exhibits, technology demonstrations, and educational training programs to advance progressive discourse on energy and lighting efficiency in buildings.

A boardroom, tech-demo room, large classroom, and an open exhibit space are now available for use by our sponsors, partners, and affiliated organizations.



## Boardroom



## Tech-Demo Room



## Exhibit Space



## Classroom



Surrogate's Courthouse  
31 Chambers Street, 6th Floor  
New York, NY 10007

Contact:

[www.be-exchange.org](http://www.be-exchange.org)  
[info@be-exchange.org](mailto:info@be-exchange.org)

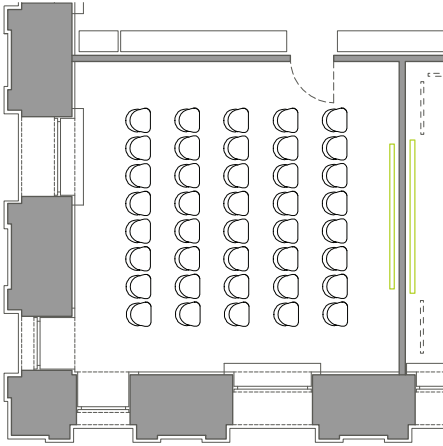




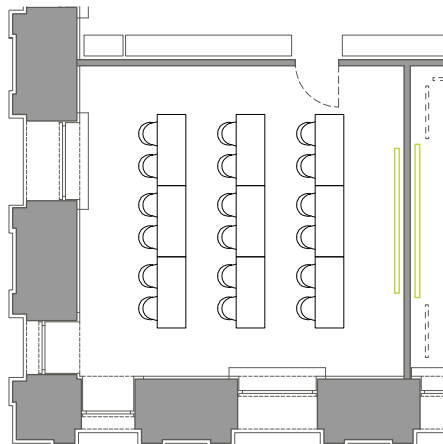
## Boardroom

Dimensions: 23'x 22' | Ceiling Height: 13'-4" | Area: 506 SF

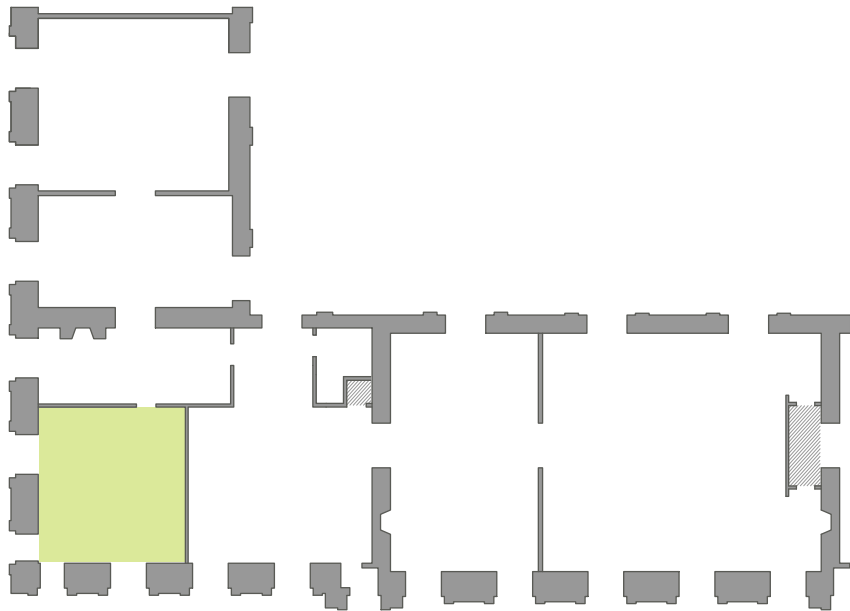
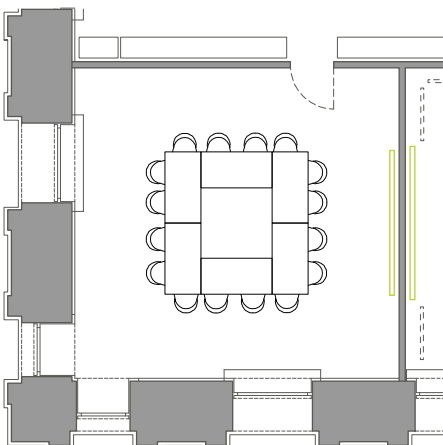
Theatre



Classroom



Roundtable



Courses + Trainings, Roundtables

### Capacities

Theatre - 40

Classroom - 18

Roundtable - 16

Reception - 30

### Technology

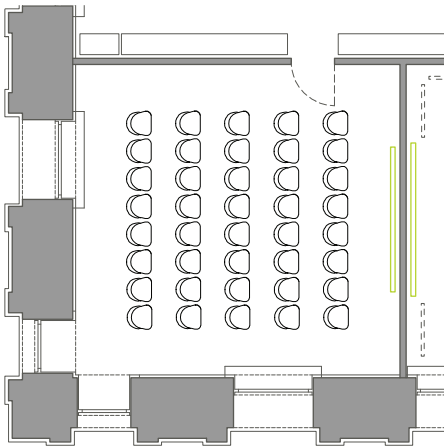
70" TV with VGA, HDMI, and USB input capacity

Mac mini computer

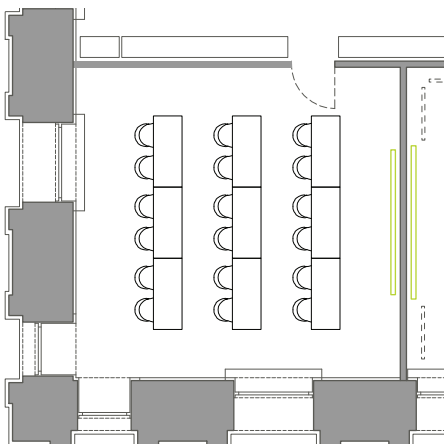
## Tech-Demo Room

Dimensions: 28' x 21' | Ceiling Height: 12' - 4" | Area: 588 SF

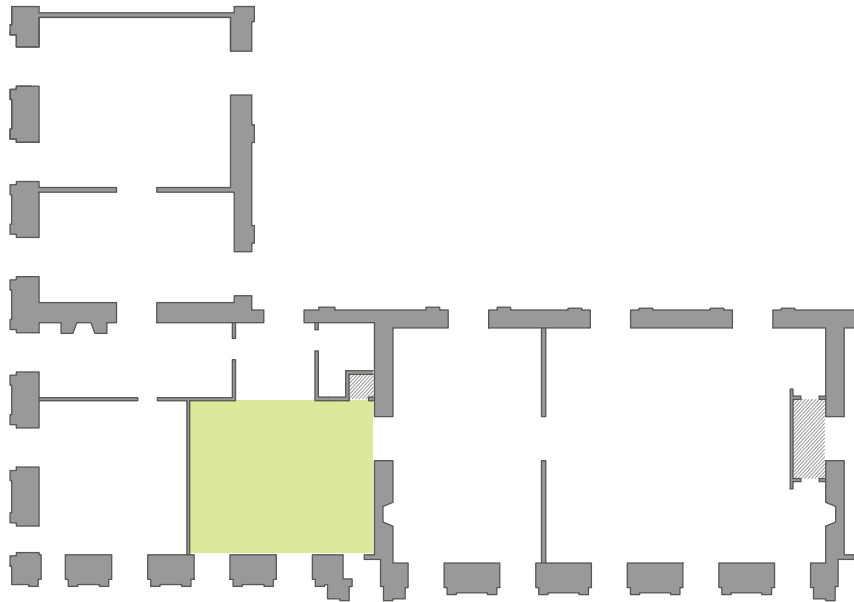
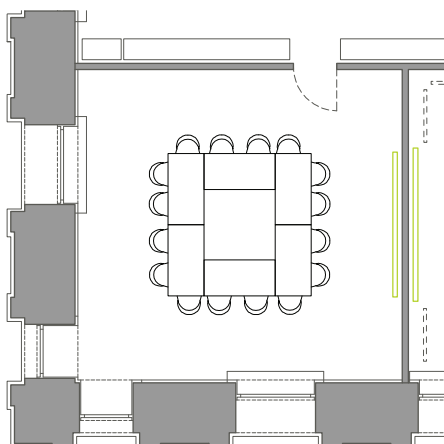
Theatre



Classroom



Roundtable



Courses + Trainings, Networking, Roundtables

### Capacities

Theatre - 40

Classroom - 24

Roundtable - 20

Reception - 50

### Technology

75" TV with VGA, HDMI, and USB input capacity

Mac mini computer

4 handheld wired mics

## Exhibit Space

Dimensions: 23' x 33' | Ceiling Height: 12' - 2" | Area: 760 SF

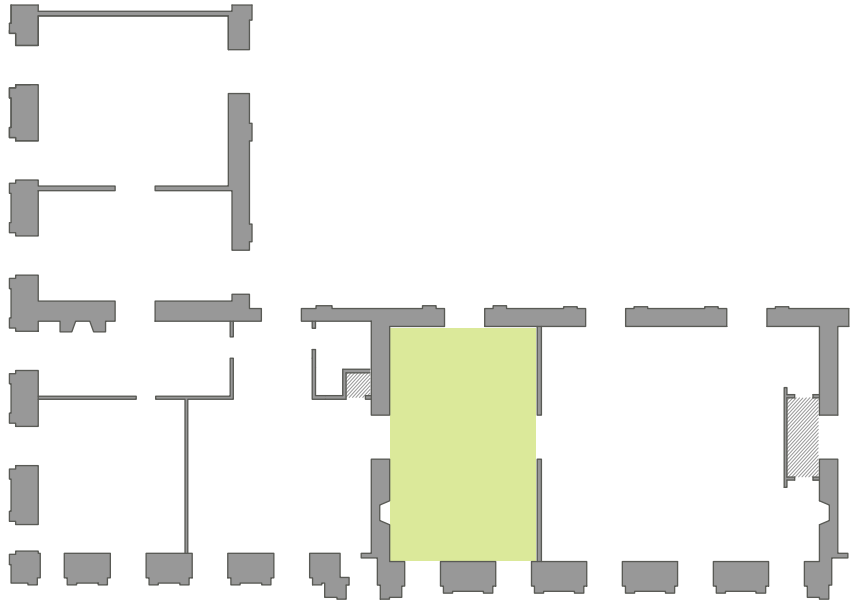
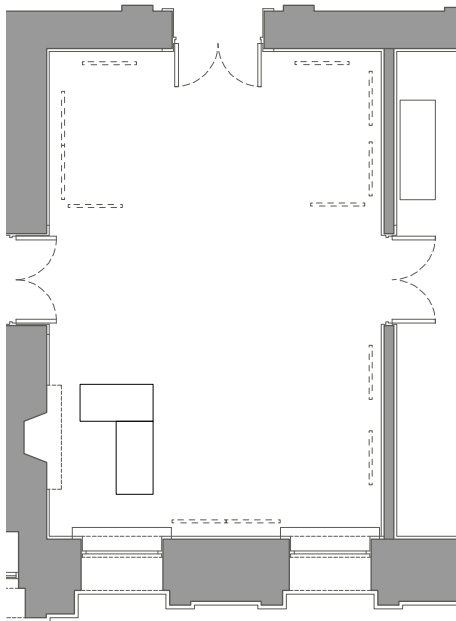


Exhibit Space



## Networking

### Capacities

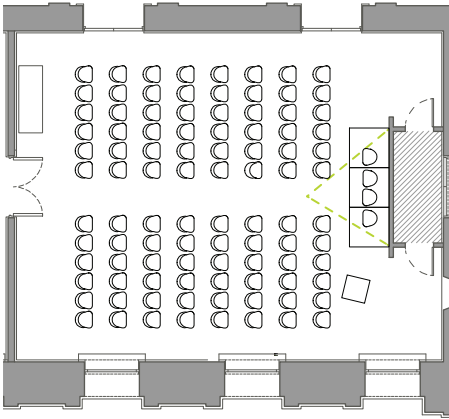
Reception - 30

### Technology

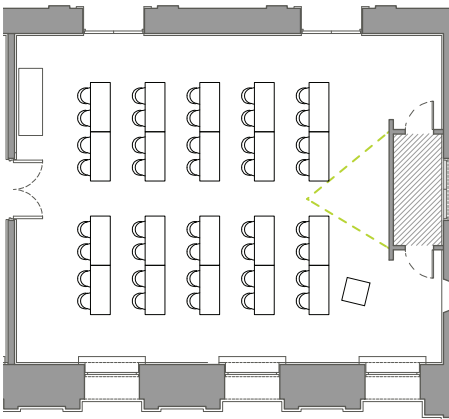
## Classroom

Dimensions: 43' x 33' | Ceiling Height: 10'-6" | Area: 1419 SF

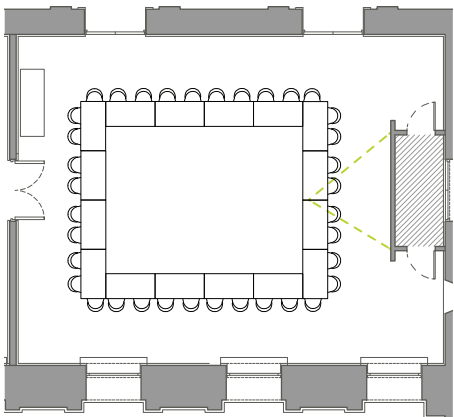
Theatre



Classroom



Roundtable



Courses + Trainings, Lectures, Panel Discussions, Networking, Screenings, Roundtables

### Capacities

Theatre - 96

Classroom - 40

Roundtable - 36

Reception - 120

### Technology

Projection wall with VGA, HDMI, and USB input capacity

Mac mini computer

4 handheld wired mics

2 wireless handheld mics

2 wireless lapel mics

Video recording and livestreaming of event- for additional fee