

Q2

April – June 2020

be
ex¹⁰

building
energy
exchange

● BE-Ex team

Richard Yancey
Executive Director

Yetsuh Frank
Managing Director,
Strategy and Programs

Talia Kula
Manager, Development
and Operations

Helen Chananie
Manager, Projects

Rebecca Esau
Manager, Projects

Regana Alicka
Associate, Projects

Will DiMaggio
Associate, Programs

Becky Kalish
Associate, Programs

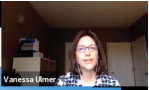
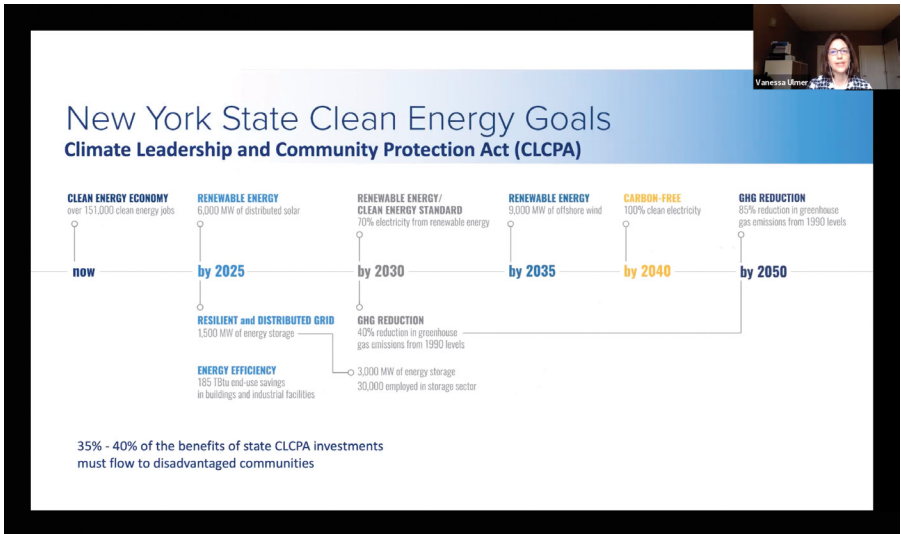
2020 Summer Interns
Noor Ain
Erifili Draklellis
Sabrina Tenteromano

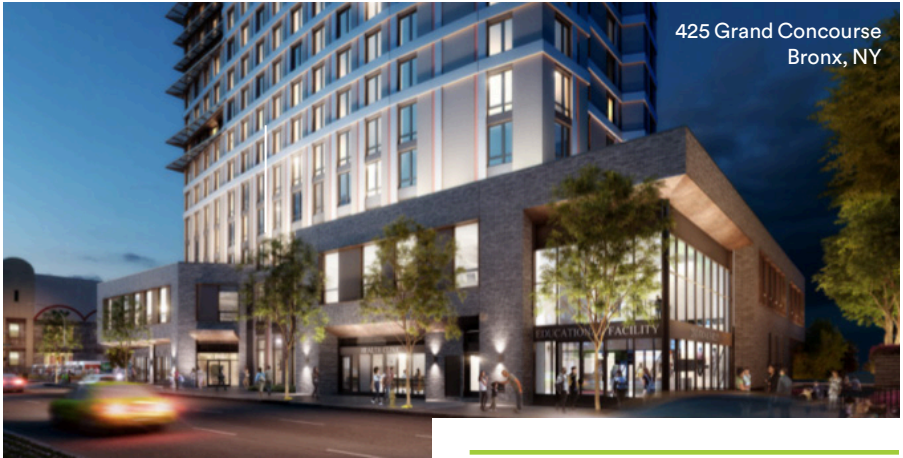
As for most everyone, our work has been dominated in recent months by pivoting to remote programming and making our resources accessible and educational in virtual formats. We hope you've enjoyed our new offerings like Radio BE-Ex and the WISE Media Club, and encourage you to check out the Anatomy of an Energy Efficient Building exhibit now displayed on our website.

April 29

Climate Mobilization Act Series: Staircase to Electrification

This event marked the seventh program of our ongoing Climate Mobilization Act Series, a collection of programs and resources aimed at demystifying the legislative package and connecting our community with relevant solutions. Staircase to Electrification focused on the building sector’s necessary move toward replacing fossil fuels with electricity.





425 Grand Concourse
Bronx, NY

May 12

Buildings of Excellence: Greening the Bronx

The fifth NYSERDA Buildings of Excellence gallery talk featured the following three exemplary Passive House buildings: 425 Grand Concourse, a mixed-use and mixed-income high-rise multifamily project seeking PHIUS+ 2015 certification; La Central Building C, a 100% affordable housing development seeking Passive House Plus certification via an all-electric building; and Park Avenue Green, North America's largest affordable Passive House.

► <https://be-exchange.org/greening-the-bronx/>

May 27

Buildings of Excellence: Housing Communities

A joint program between BE-Ex and NYSERDA, this marked the sixth event of our Buildings of Excellence Series, featuring Bushwick Alliance and HELP ONE, two transformative projects in Brooklyn.



HELP ONE
Brooklyn, NY

► <https://be-exchange.org/buildings-of-excellence-housing/>

Change is Made Together

by Yetsuh Frank

Managing Director, Strategy & Programs

Building Energy Exchange

On March 10th BE-Ex held a joint program with ASHRAE New York in our Manhattan resource center. Although there were not yet specific directives available from the City or State regarding COVID-19 we were of course following the progress of the disease and had taken several precautions, including providing signage asking people to avoid shaking hands and to practice frequent and thorough hand washing. We reaffirmed these with announcements during the program and we eliminated the breakfast buffet we had planned. There were lots of elbow bumps, and not a few wry smiles that reflected our unease with the increasing awareness of the potential severity of this growing epidemic, but in large measure the program looked much like the several hundred programs we have held across our ten year history. Only three days later we had closed the resource center to public programs and vacated

our office. I recall this as a reminder of how quickly things changed and how rapidly so many sectors of our economy pivoted to remote working. The disruption, of course, has been near total. The virus has ravaged the city we call home, and most every other community as well. The most fortunate among us, those that have not lost their loved ones or their jobs, have merely had their lives turned upside down.

For our small part in this global drama we quickly committed to continuing to educate decision makers in our industry, but also to provide creative platforms for engaging our community. At a time when many of us were suffering from severe isolation and near constant stress we felt that providing a few bright moments to see and talk with others, albeit virtually, was the least we could do. We launched a live interview series, Radio BE-Ex, that offers a more focused and intimate way to learn about the

work of one or two individuals at a time. The team working on WISE (our Women in Sustainability & Energy series) quickly offered several small format discussion style events that have been very engaging. Despite our reservations about the long-term viability of remote programming, the raw numbers, at least, have been encouraging. We have had consistently higher registration and attendance to our (remote) programs across the board, with a recent joint program with ASHRAE New York on HVAC systems and COVID-19 drawing an audience more than twice the size of any other program in our history.

If there are any silver linings to the COVID-19 pandemic, one of them might be that it has highlighted the

degree to which we all rely on one another to create an actual community. The virus had made plain that no person is an island and apart from a few noisy outliers gleefully highlighted by our national media, most of us have simply knuckled down and done the things needed to slow the spread of this vicious disease. At our programs and on calls with our partners I sense a renewed feeling of togetherness—an animating force behind people’s voices that we are not just going to get through this but we are going to come out the other side better than before.

COVID-19 is directly related to the global warming crisis. In both cases there is virtually nothing that one person can do on their own to halt what is a systemic disaster. In both cases we

“We’ve got 21st century technology and speed colliding head-on with the 20th and 19th century institutions, rules and cultures.”

—Amory Lovins

“All is connected... no one thing can change by itself.”

—Paul Hawken

all need to act dramatically, together, to ensure a just and equitable future for both ourselves and everyone else. If I allow myself to feel optimistic in this moment it is because I see a renewed sense of communal purpose in myself and others. Surely this rising courage has played a role in the dramatic advancement of protests against racism and police brutality around the country. Our message of solidarity with those protests is on page 11, but I find myself incredibly excited, despite the loss we have all endured, by what this renewed sense of community means for all these interrelated issues of racial justice, environmental justice and human well being. To use a tired phrase, it genuinely feels like an inflection point.

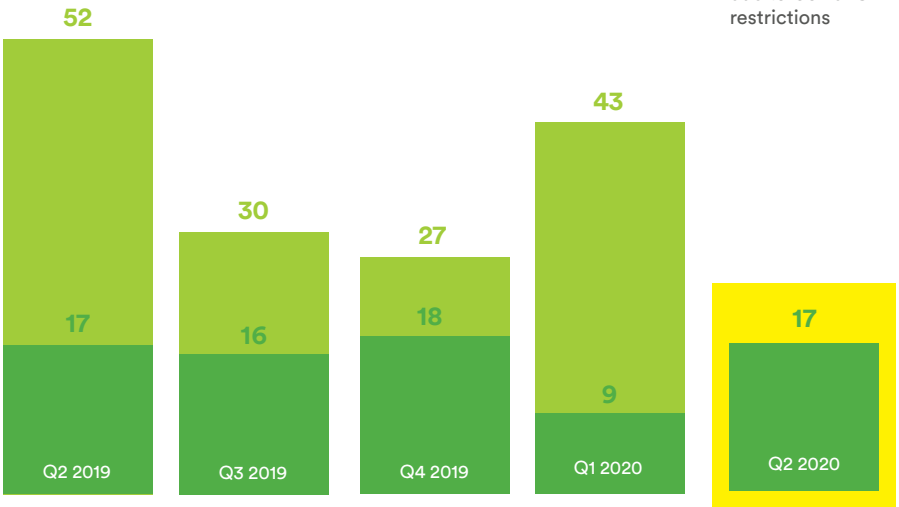
In our industry it has been heartening to see how readily people have embraced the idea that buildings can play a positive role in our re-emergence from the COVID-19 pandemic. I think the green building movement, in large measure, is responsible for this positive outlook because we have been framing buildings not as the cause of major problems but as their solutions. In fact,

many of the measures recommended to mitigate the transmission of viral disease—increased fresh air, more filtration of that air, proper humidity, access to daylight, operable windows—are strategies our community has been advocating for decades. Energy might be the technical lever most often used to force change in this regard, but ultimately it is the impact on people that we are concerned with. At BE-Ex we don't ask how to use the least amount of energy in buildings. Instead we ask how do we provide the best possible indoor environment for people while using the least energy. Our mission is to “accelerate the transition to healthy, comfortable and energy efficient buildings.” COVID-19 has been brutal, and it is not close to over yet, but it feels to me that it has hardened our resolve to realize that mission and advance so many other critical causes.



We are thrilled by the number and diversity of developed events, which span a wide array of topics on energy efficiency in the built environment. Since mid-March, we have pivoted to remote programming and expanded on our traditional formats.

BE-Ex hosted events



BE-Ex developed events

diversity goals

1. No all male panels
Q2 number: 2
2. 50% female speakers across BE-Ex events
Q2: 47%



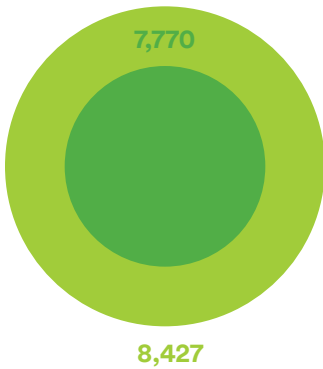
average number of days on calendar, BE-Ex events



average attendance, BE-Ex events

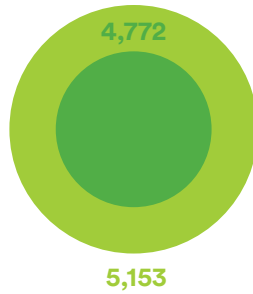
BE-Ex continues to realize excellent audience growth. Since Q2 of 2019, our newsletter audience has grown 58% with 2020 Q2 quarterly growth at its highest rate out of the past four quarters. Our social media following has kept pace, growing over 50% over the past year.

newsletter subscribers

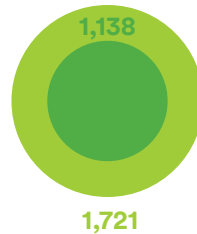


■ Q1 2020
■ Q2 2020

social media followers



resource downloads



program audience geographic distribution



16,134

unique website impressions in Q2 2020

Buildings of Excellence

In partnership with NYSERDA, Building Energy Exchange is hosting a series of gallery talks celebrating the Buildings of Excellence competition, a NYSERDA program recognizing low and zero-carbon emitting buildings throughout New York state. These talks highlight award winners and their insights into pathways to net-zero building performance.

Climate Mobilization Act

With support from the Natural Resources Defense Council and in partnership with the Mayor's Office of Sustainability and the NYC Retrofit Accelerator, this series aims to demystify the components of the Climate Mobilization Act and connect our community with relevant solutions.

Women in Sustainability and Energy (WISE)

The Women in Sustainability and Energy (WISE) series, founded in 2015, is an inclusive platform for all people to learn from experienced women leaders, to share knowledge, and to advance equity in the workplace.

**ASHRAE NY
Technical Breakfasts**

This series explores the ASHRAE Technical Standards, connecting the science of these guidelines with real world applications.

Radio BE-Ex

This new live interview podcast series connects our community with industry leaders across a variety of fields—from local climate action policy, to Passive House, to healthy buildings, and more.

In Solidarity

The Building Energy Exchange wishes to express our unequivocal support for racial justice and those protesting racism and systemic violence against Black people and other communities of color. As an environmental organization, we recognize that racial justice and climate justice are inextricably linked. We remain committed to the advancement of buildings that enable a healthful, sustainable and equitable future for every person in every community, especially for those who have been denied these benefits the longest.

Black lives matter and we stand alongside those demanding action. We recognize the need for systemic change in our society and across our field. It is our imperative and responsibility to foster a more inclusive and supportive community through our organization, our public programs, and other offerings.

June 22

**Daylight Hour 2020:
At Home Edition**

Launched in 2014, BE-Ex's annual social media campaign Daylight Hour raises awareness about using natural daylight in lieu of electric lighting. Due to COVID-19, this year's campaign takes on an "at home" twist, accompanied by creative at home themed awards to incentivize participation.



June 25**Catalytic Capital:
Predevelopment Loans
for Affordable Housing**

BE-Ex will host a gathering of New York City Energy Efficiency Corporation (NYCEEC), NYC Department of Housing Preservation and Development (NYC HPD), and Joint Ownership Entity NYC (JOE NYC) to discuss their recent transactions to fund predevelopment work at 34 affordable multifamily buildings in upper Manhattan and the Bronx.



► <https://be-exchange.org/catalytic-capital/>

July 9**Climate Mobilization Act
Series: Unlocking Tenant
Efficiency**

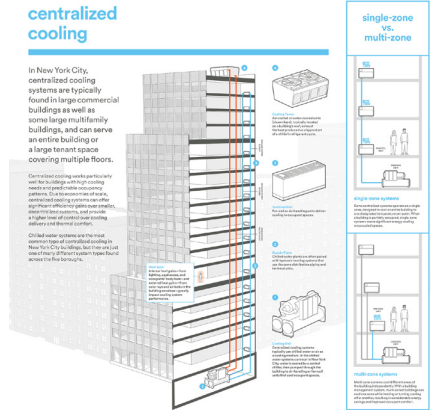
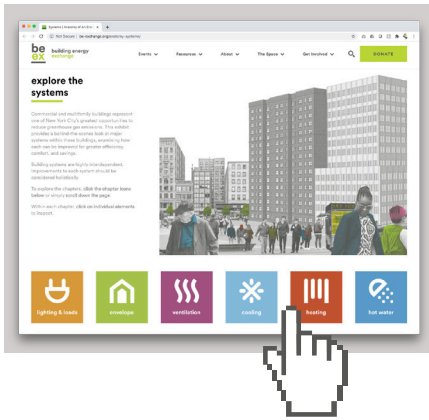
A joint program with Natural Resources Defense Council, this will mark the eighth event of our Climate Mobilization Act Series. Panelists will discuss the implications of Local Law 97, and the myriad ways in which tenants can dramatically improve their energy use.

► <https://be-exchange.org/cma-series-unlocking-tenant-efficiency/>

completed

exhibit webification
Anatomy of an Energy Efficient Building

The anatomy exhibit covers building energy systems and key efficiency solutions. The exhibit's virtual debut was on May 4. Using the interactive website, viewers can virtually navigate exhibit sections, including building system chapters with corresponding efficiency solutions.



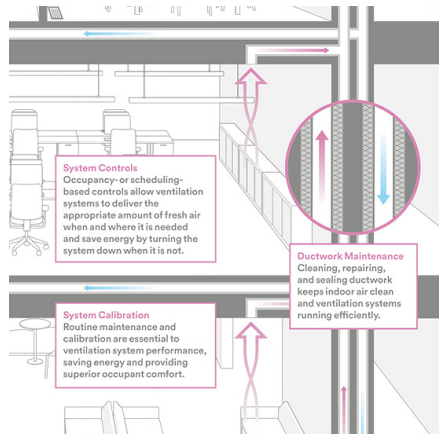
steam systems

70%
of New York City's large buildings use steam systems to generate heat.

Steam heat utilizes energy, generally produced by burning greenhouse gas-emitting fossil fuels, to produce steam distributed through a building to heat occupant spaces.

Many steam heated buildings suffer from loud, clanging pipes, leaky radiators, and simultaneous under- and overheating of occupant space. These common problems not only waste energy and cause discomfort, but also drive up utility and maintenance costs.

Fortunately, with proper maintenance and a few simple upgrades, steam heating systems can provide reliable and balanced heat more efficiently. Before making a comprehensive steam upgrade building owners should consid



upcoming



e-learning platform
BE-Ex Education on Demand

The BE-Ex online learning platform will prepare building industry professionals with the knowledge needed to effect real change. This platform is expected to launch August 2020.



exhibit
Envelope Showcase

These complementary showcases will expand on the recently completed Anatomy of an Energy Efficient Building exhibit by each focusing on one of the following seven building systems: building envelope, ventilation, heating, cooling, domestic hot water, lighting, and plug loads.

We hope you have found our remote programming and online resources educational and inspiring. Don't hesitate to reach out with ideas about how we can improve our engagement with you in the coming months.

programs (online)

WISE Media Club: How Women Built the Environmental Movement

April 21st

Radio BE-Ex

April 22nd: Earth Day with Dan Egan and Sara Neff

May 7th: Our Passive Future, with Lois Arena and Monte Paulsen

May 14th: Healthy Buildings in the Age of COVID-19 with Joanna Frank

May 21st: New York's Path to Decarbonization with Janet Joseph

May 28th: Passive Houses with Architects In Cho and Michael Ingui

June 18th: Celebrating Daylighting with Steve Selkowitz

Climate Mobilization Act Series: Staircase to Electrification

April 29th

Buildings of Excellence: Greening the Bronx

May 12th

WISE: Ask Me Anything with Vicki Kuo

May 13th

WISE Media Club: Designing with Nature for Public Health and Community Cohesion

May 20th

Buildings of Excellence: Housing Communities

May 27th

Radio BE-Ex: Building Passive with Ken Levenson

June 4th

Optimizing HVAC for Health and Efficiency

June 10th

WISE Media Club: New Cities, Old Problems

June 16th

Daylight Hour 2020

June 22nd

Catalytic Capital: Predevelopment Loans for Affordable Housing

June 25th

project status

Q2 2020

- Support: Local Law 97 Messaging Grid
- Playbook: Existing Building Insulation
- Primer: Climate Mobilization Act Legislation
- Online Tool: Local Law 97 Calculator
- Case Study: USGBC/Mecho
- Brochure: Buildings of Excellence Awards
- NYSERDA Multifamily Retrofit Playbook
- Primer: Passive House (Updated)
- Exhibit Showcase: Envelope Systems
- Report: High Performance Deep Retrofit Profiles
- On Demand Primer: Passive House
- On Demand Primer: CMA

Q3

- Passive House Feasibility Studies
- Report: Data Into Action, Commercial
- E-Learning Platform

Q4

- Passive House Technical Modules

■ COMPLETED □ ANTICIPATED

