

Advancing Passive House Policy

NAPHN 2016 policy session 2

presentations

“The building sector offers the largest low-cost potential in world regions to lower emissions.”

*- Dr. Diana Urge-Vorsatz, Vice Chair,
Intergovernmental Panel on Climate Change (IPCC)*

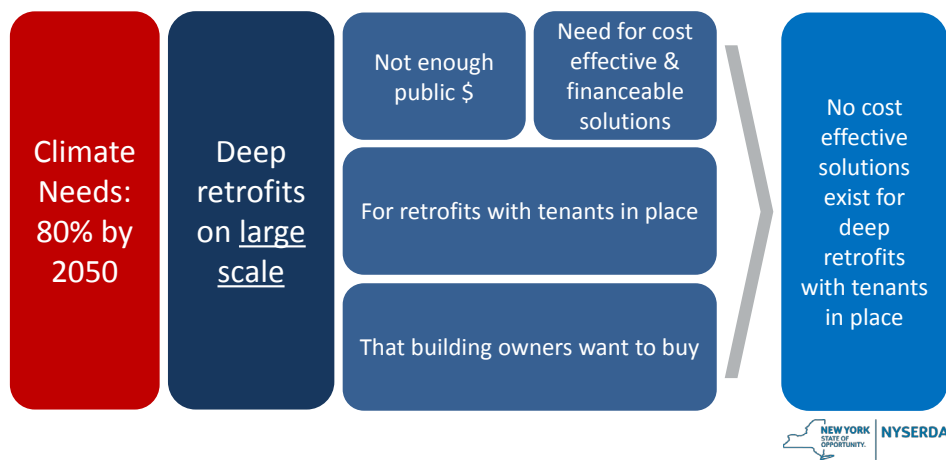


Creating the Next Generation of Housing

NAPHN16 Catalyzing Retrofits Sessions

June 14, 2016

2



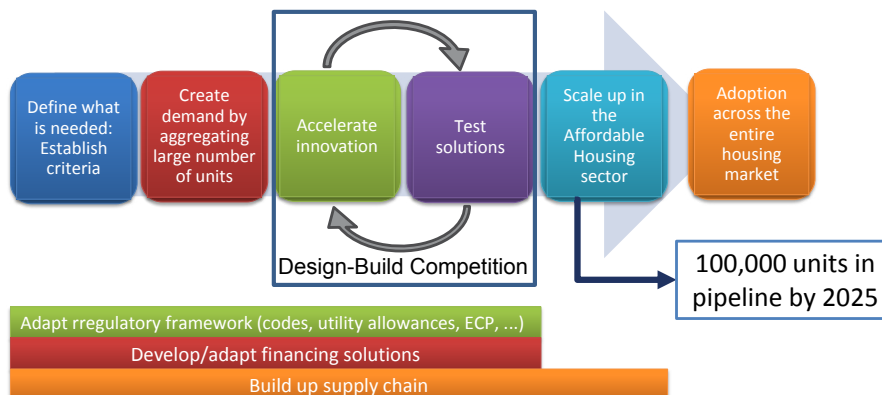
3

Goal of the Initiative

Create a large scale, self-sustaining market for deep energy retrofit solutions

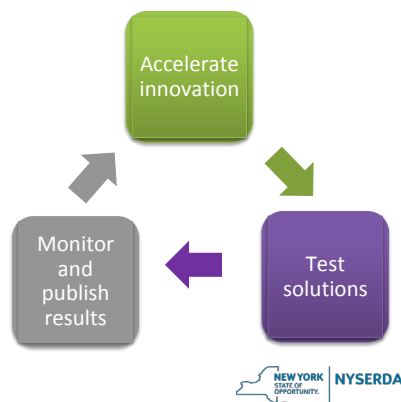
- Attractiveness
- High energy performance
- Limited disruption to tenants
- Cost-effectiveness

A Targeted but Comprehensive Initiative



Key Elements of the Design-Build Competition

- Building types → Scale
- Technology agnostic
- Rigorous performance monitoring
- Opportunity for Non Energy Benefits quantification



New York Specific Context

Additional Challenges

- Building types → different challenges
- Economic context
- Publicly owned vs. subsidized housing
- Regulatory context

Opportunities

- Vibrant Energy Efficiency Community
- Reforming the Energy Vision

A Large Potential Market

1.7 million units of Affordable Housing in NY

20 year cycle

40,000
units/year

\$30,000 to
\$50,000 per unit

\$1.2 to \$2 billion annual market



The Building Energy Exchange connects the Manhattan real estate communities to energy and lighting efficiency solutions through exhibitions, education, technology demonstrations, and research. We identify opportunities, navigate barriers to adoption, broker relationships, and showcase best practices at our resource center in the Surrogate's Courthouse in Manhattan.

be-exchange.org