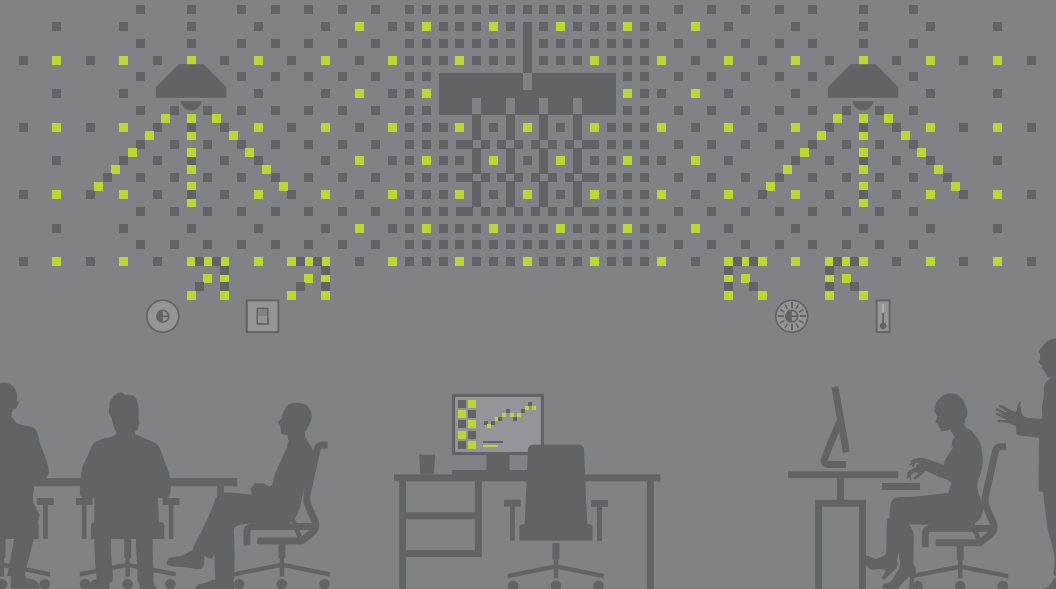


exhibit

lighting the future

An interactive exhibit on advanced lighting control system retrofits



be
ex

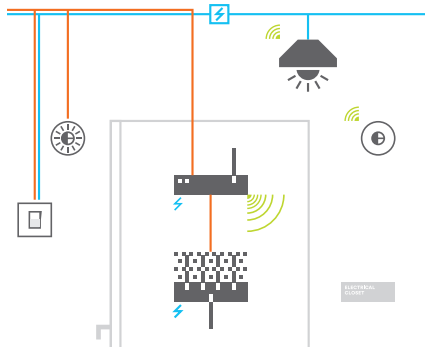
building
energy
exchange

#lightingthefuture

advanced lighting control benefits

Careful retrofits can improve the function of lighting and shading systems while saving money and energy.

advanced controls



± 45% savings

A control system is the crux of the retrofit, ensuring functionality and integration. Controls can be adapted to suit your existing construction and occupancy needs.

benefits

- simplify savings
- optimize functions

fixtures & lamps



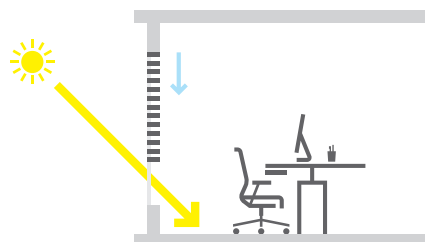
± 30% savings

Incorporating higher efficiency lamps or fixtures should result in significant savings, especially if replacing with LEDs.

benefits

- clear savings
- low maintenance

daylighting



± 10% savings

Automated shades use both software and sensors to maximize daylight and minimize glare.

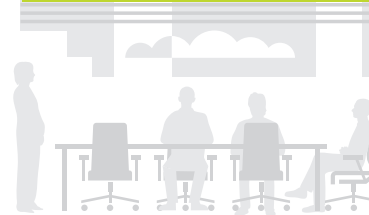
benefits

- maximize views
- prioritize comfort

anatomy of a retrofit

Understanding the process and players at the beginning of a retrofit can make the project easier and more successful.

1. identify



Identify your project manager; define your needs and energy savings goals; determine your stakeholders, budget, and schedule.

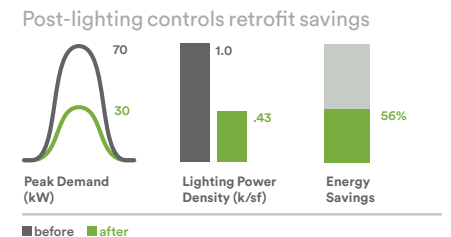
2. technology selection

Using your goals and specific needs to guide your team, work with a lighting designer and/or distributor to determine the functions you want from your lighting and shading system. This allows you to optimize comfort, savings, and energy efficiency in your space.



3. finance

Capital costs can be reduced through incentives from NYSERDA, Con Edison, and other programs. Financing is available through many lenders and from non-profits like NYCEEC.



4. install & commission

Task your project manager with continual oversight during procurement, installation, and commissioning in order to avoid problems and delays. Retrofits are often more complicated than new construction, requiring on-going attention to the process.

5. educate

Successful projects require education that targets all stakeholders, from executives to operations staff. Case studies and other online resources from BEEEx can help build the case for an advanced lighting control system retrofit.

resources

learn more about the exhibit content, upcoming trainings and symposiums on lighting retrofits, and other resources on the BEEx website: be-exchange.org



support

lighting the future is made possible by the generous support of:



NYSERDA



EVERYTHING MATTERS

acuity brands lighting • crestron • eaton lighting • enlightened fluxwerx • lutron electronics • mechosystems • OSRAM sylvania, inc. philips lighting • selux • specification lighting sales

living lab project partners

education and outreach lead



building
energy
exchange

technical lead



be-exchange.org

[#lightingthefuture](https://twitter.com/lightingthefuture)